

Named-User Enabled Lab Licenses



Adobe Creative Cloud Education

Safe Harbor disclosure:

This presentation contains **forward-looking statements** that involve uncertainties and assumptions.

The final product may have material differences from what we express or imply in this presentation.



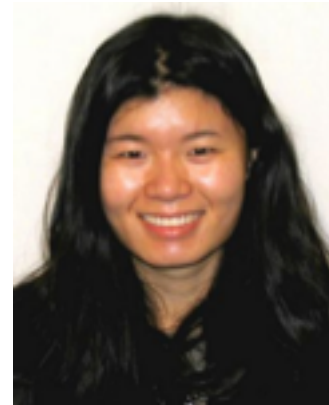
Our **Adobe** TEAM



Johann Zimmermann
Group Manager



Peppe Ragusa
Senior Product Manager



Chi Chen
Experience Designer



Holger Buerger
Senior Product Manager

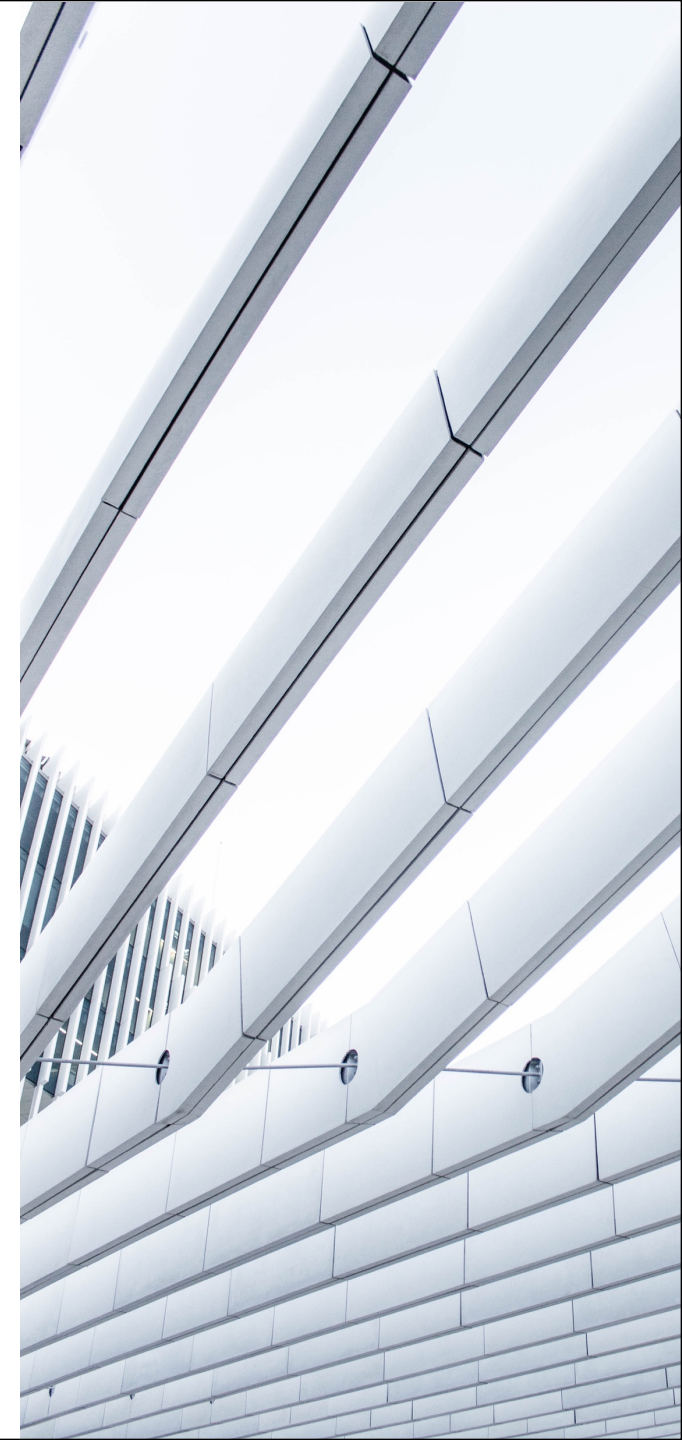
TODAY'S AGENDA

1. OVERVIEW

2. END USER EXPERIENCE LAB

3. ADMIN EXPERIENCE

4. Q&A



WELCOME & THANK YOU

Adobe is here to listen and learn!

- Unlocking the full value of the cloud
- Improving IT admin and user experiences
- Reducing IT headaches
- Enhancing licensing, user, and computer management



LICENSING TECHNOLOGY

UPDATE

- Creative Cloud and Acrobat with new technology in 2018
- New software versions released in October will no longer work with ETLA serial numbers or VIP device licenses
- Active serial numbers and device licensing will support existing software versions
- New named-user enabled lab license to launch in early FY19



SECURITY

No longer using technology like
Flash and AIR



FLEXIBLE ACTIVATION

Secure user activation via
Federated Identity



COMPATIBILITY

Built on 64 bit architecture for the
modern OS



APPLICATIONS

- Cloud first (e.g. XD)
- Named User provides access to the latest versions



ADMINISTRATION

Named User and lab will be
administered centrally via the Adobe
Admin Console



SERVICES

Named User provides access to
services such as Libraries, Typekit
and Stock.

End User Experience



Adobe Creative Cloud Education



Named User License & Creative Cloud

- Access to latest Creative Cloud products and services
- Support device workflows: Desktop & Mobile & Web
- Work from home for Faculty/Staff
- BYOD for students

Serial or Device License



- No access to next Gen Apps, Services: **Spark, Experience Design (Xd), Dimension** etc.
- No personalized experience across devices
- No access to services

NAMED USER: ACCESS SCENARIOS



FREE USER

LICENSE PURCHASED
BY USER

LICENSE PURCHASED
BY SCHOOL

SCHOOL
ACCESS



Full Creative Cloud Experience

HOME
ACCESS



- Trial access to all applications
- Free level of services



- Varies by plan



- Full CC Experience



New Capabilities with **Named User** for **Lab** Deployments

LOG IN

Users access all Apps and Services by logging in

FILE SYNC

Sync of files turned off
CC Services sync enabled

UPDATES

Regularly available updates to support security

UPGRADES

Continues improvements to product features

Admin Experience

Lab Licenses



Adobe Creative Cloud Education

KEY PERSONAS



- Access modern tools and workflows.
- Full CC experience in labs (next-gen apps and services)



- Teach my students modern tools and workflows.
- Full CC experience in labs (next-gen apps and services)



- Minimize management overhead.
- Simpler Lab License administration



ADMIN CONSOLE

The screenshot displays the Adobe Admin Console interface. At the top, a navigation bar includes 'Admin Console', 'Overview', 'Products', 'Users', 'Packages', 'Account', 'Settings', and 'Support'. The user is logged in as 'Pepper School'. The main content area is titled 'Overview' and features a 'Products' section with three product cards. The first card is for 'CC All Apps for Labs' with 0/100 licenses used. The second and third cards are for 'Spark with Premium Features for Higher-Ed - 2 GB' and 'Spark with Premium Features for K-12 - 2 GB', with 0 and 5 licenses used respectively. Each card has an 'Assign Users' button. On the right, a 'Quick links' section contains 'Add User to Organization' and 'Add Admin'.

Admin Console Overview Products Users Packages Account Settings Support Pepper School

Overview

Products Export to CSV All products Quick links

- CC All Apps for Labs**
0 / 100 licenses used
Assign Users
- Spark with Premium Features for Higher-Ed - 2 GB**
0 licenses used
Assign Users
- Spark with Premium Features for K-12 - 2 GB**
5 licenses used
Assign Users

Quick links

- Add User to Organization
- Add Admin

LICENSE MIGRATION

A) Schools with serial-number deployment

The new Product will be automatically added to the Admin Console

B) Schools with “Device Licenses”

The Admin Console will offer a Migration workflow to convert to the new Product



NEW CAPABILITIES

- Define and manage labs (“profiles”)
 - By network range
 - By deployed package
- Distribute your License Quota across labs
- Configure the access policy for each lab
 - “Open Access”
 - “School users only”
 - “School users with school accounts only”
- See high-level license consumption stats



LAB CONFIGURATION

- Licenses can only be used in the school labs
- Combination of IPs and Packages
- Licenses can be recovered and used on new devices
 - E.g. when a machine breaks, is re-purposed, etc.



QUESTIONS?





Adobe